

Internal Use Only
Strictly Confidential

Product Information Letter

Vol. No.

New Product: -SRG-300SE
-SRG-301SE

Category : HD Color video camera

Date : As of 10th Sep., 2014

Section 2, Product & Marketing Dept,
CCS Biz Div, PSG,
IP&S,

Issued By :

Inspected By :

Inspected By :

Inspected By :

Approved By :

I. Shimada

K. Hanamura

H. Sato

F. Kageura

Y. Kajiura

Product Information Letter

SRG-300SE

SRG-301SE

As of 10th Sep., 2014

PSG CCS Product Planning

Product Code

[illegible]

Table of Contents

- Product Concept
- Main Features
- Other Features
- System Configuration & Connection
- Specifications
- Comparison Chart
- Cosmetic Design & External Appearance
- Pin Assignment
- Safety Approval

Product Concept

Product Concept

- ***Various application tend to go toward to IP-based product.***

In recent days, IP based product and system are increasing in various market because IP brings a lot of benefit such as easily built an infrastructure.

This tendency is not only consumer market but also professional such as broadcast.



- ***Audio is especially-important functions in remote shooting camera market.***

In lecture capture at the education market case, teacher's voice quality is more important than video for students who takes a lesson in a remote location.

But it has no specialized camera for audio in the existing market so far.

- ***Promote the existing and new market with SRG-300SE.***

Sony provide the IP remote shooting camera with enhanced audio functions to existing remote shooting market in advance of competitor such as Panasonic, Vaddio and security camera manufacture. We promote traditional remote shooting camera market and new market who need audio features with IP technology, and try to maintain high market share.

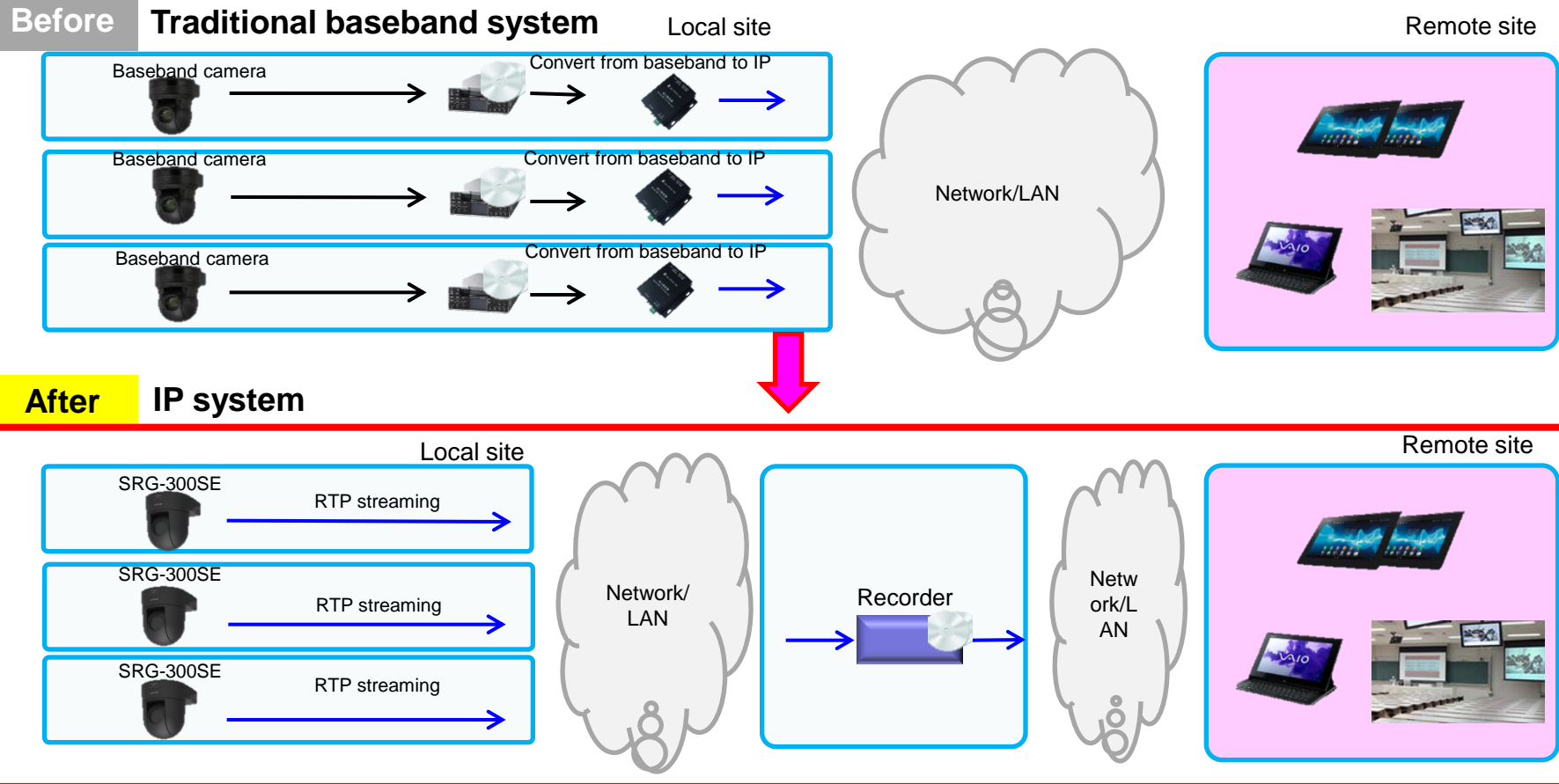
Main Features

Main Features "Sales points"

- **Full-HD IP video and audio streaming**
 - IP H.264 Full-HD video and AAC audio streaming
 - IP H.264 and baseband video through 3G-SDI simultaneous transmission
- **Support an audio**
 - Support an audio input(selectable LINE/MIC-level)
 - Embedded Auto Gain Control
 - Easy audio effect equalizer
- **Reduce the latency inside camera**
- **Web viewing and operation**
- **Up to 256 preset position**

H.264 Full-HD video and audio streaming①

- Simple AV system migration from baseband to IP.
- Create a seamless environment from anywhere.

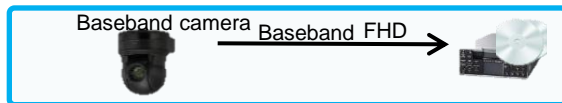


H.264 and baseband video simultaneous transmission

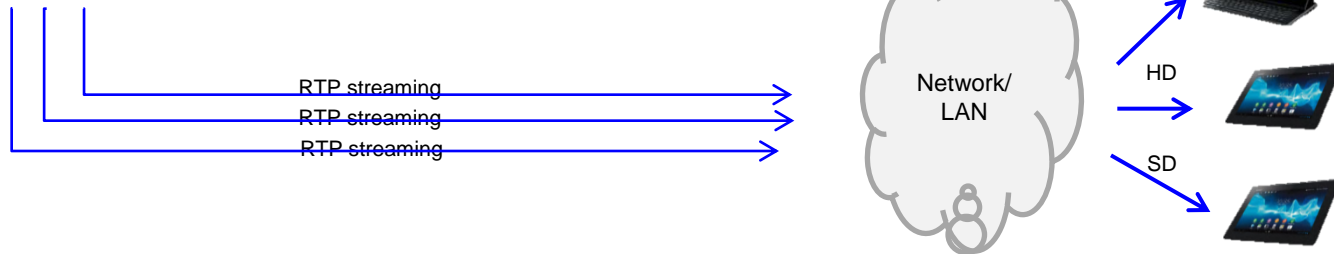
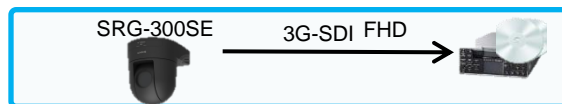
- It can simultaneously output 1080/60p baseband video through 3G-SDI and H.264 compressed video/audio via IP.
- Available up to 3 instances but it has limitation according to video format.(Refer to details on next page)

*Audio and video transmission supports only IP video streaming.(Baseband is not possible to transmit audio.)

Before Traditional baseband system



After IP system



Up to triple H.264 output

- Available up to 3 instances but it has limitation according to video format.
- In case of 1080/60p transmission, it can transmit just 1 instance due to use large bandwidth. But in case of selects frame-rate to 30fps, it can transmit combinational 3 type of video (FHD, HD and SD).

Full-HD

Image 1 (30 fps, H.264)	Image 2 (30 fps, H.264)	Image 3 (30 fps, H.264)
1920 × 1080	1280 × 720 or lower	640 × 480 or lower
1280 × 720	1280 × 720 or lower	640 × 480 or lower
1024 × 576	1280 × 720 or lower	640 × 480 or lower
720 × 576	1280 × 720 or lower	640 × 480 or lower
704 × 576	1280 × 720 or lower	640 × 480 or lower
720 × 480	1280 × 720 or lower	640 × 480 or lower
640 × 480	1280 × 720 or lower	640 × 480 or lower
640 × 360	1280 × 720 or lower	640 × 480 or lower
352 × 288	1280 × 720 or lower	640 × 480 or lower
320 × 184	1280 × 720 or lower	640 × 480 or lower

Image 1 (60 fps, H.264)	Image 2 (60 fps, H.264)	Image 3 (60 fps, H.264)
1920 × 1080	Not Selectable	Not Selectable
1280 × 720	1280 × 720 or lower	Not Selectable
1024 × 576	1280 × 720 or lower	Not Selectable
720 × 576	1280 × 720 or lower	Not Selectable
704 × 576	1280 × 720 or lower	Not Selectable
720 × 480	1280 × 720 or lower	Not Selectable
640 × 480	1280 × 720 or lower	Not Selectable
640 × 360	1280 × 720 or lower	Not Selectable
352 × 288	1280 × 720 or lower	Not Selectable
320 × 184	1280 × 720 or lower	Not Selectable

Up to triple H.264 output

HD

Image 1 (30 fps, H.264)	Image 2 (30 fps, H.264)	Image 3 (30 fps, H.264)
1280 × 720	1280 × 720 or lower	640 × 480 or lower
1024 × 576	1280 × 720 or lower	640 × 480 or lower
720 × 576	1280 × 720 or lower	640 × 480 or lower
704 × 576	1280 × 720 or lower	640 × 480 or lower
720 × 480	1280 × 720 or lower	640 × 480 or lower
640 × 480	1280 × 720 or lower	640 × 480 or lower
640 × 360	1280 × 720 or lower	640 × 480 or lower
352 × 288	1280 × 720 or lower	640 × 480 or lower
320 × 184	1280 × 720 or lower	640 × 480 or lower

Image 1 (60 fps, H.264)	Image 2 (60 fps, H.264)	Image 3 (60 fps, H.264)
1280 × 720	720 × 576 or lower	Not Selectable
1024 × 576	1024 × 576 or lower	Not Selectable
720 × 576	1280 × 720 or lower	Not Selectable
704 × 576	1280 × 720 or lower	Not Selectable
720 × 480	1280 × 720 or lower	Not Selectable
640 × 480	1280 × 720 or lower	Not Selectable
640 × 360	1280 × 720 or lower	Not Selectable
352 × 288	1280 × 720 or lower	Not Selectable
320 × 184	1280 × 720 or lower	Not Selectable

Image 1 (60 fps, H.264)	Image 2 (30 fps, H.264)	Image 3 (30 fps, H.264)
1280 × 720	1024 × 576 or lower	Not Selectable
1024 × 576	1280 × 720 or lower	Not Selectable
720 × 576	1280 × 720 or lower	Not Selectable
704 × 576	1280 × 720 or lower	Not Selectable
720 × 480	1280 × 720 or lower	Not Selectable
640 × 480	1280 × 720 or lower	Not Selectable
640 × 360	1280 × 720 or lower	Not Selectable
352 × 288	1280 × 720 or lower	Not Selectable
320 × 184	1280 × 720 or lower	Not Selectable

Image 1 (30 fps, H.264)	Image 2 (60 fps, H.264)	Image 3 (60 fps, H.264)
1280 × 720	1024 × 576 or lower	Not Selectable
1024 × 576	1280 × 720 or lower	Not Selectable
720 × 576	1280 × 720 or lower	Not Selectable
704 × 576	1280 × 720 or lower	Not Selectable
720 × 480	1280 × 720 or lower	Not Selectable
640 × 480	1280 × 720 or lower	Not Selectable
640 × 360	1280 × 720 or lower	Not Selectable
352 × 288	1280 × 720 or lower	Not Selectable
320 × 184	1280 × 720 or lower	Not Selectable

SDI Video format

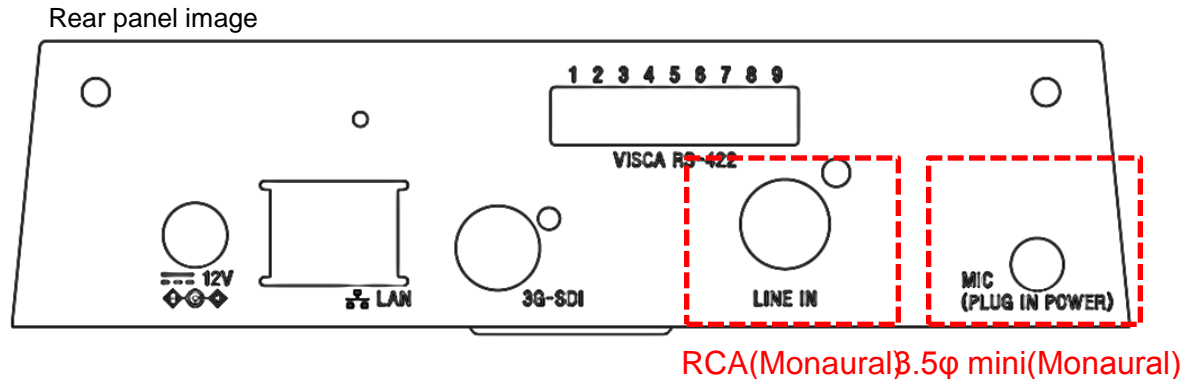
- You can select the SDI output video format.
- The default setting of 3G-SDI video resolution is 1080/59.94p(A).
- Larger video resolution than from selected SDI can not be streamed on IP.
- If camera connects to the HD-SDI recording device, select resolutions such as 1080/59.94i, 720/59.94p..

	Video format
59.94Hz	1920 × 1080p/59.94 (Level A)
	1920 × 1080p/59.94 (Level B)
	1920 × 1080i/59.94
	1920 × 1080p/29.97
	1280 × 720p/59.94
	1280 × 720p/29.97
50Hz	1920 × 1080p/50 (Level A)
	1920 × 1080p/50 (Level B)
	1920 × 1080i/50
	1920 × 1080p/25
	1280 × 720p/50
	1280 × 720p/25

Support an external audio input

- Selectable an external audio input RCA for LINE-level or a 3.5φ for MIC.(Both supports Monaural)

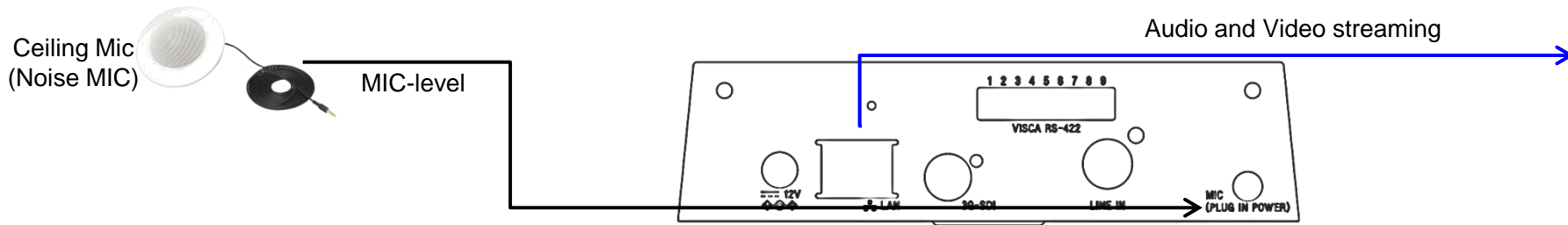
*Both can not use simultaneous.





Support an external audio input

- Supports 3.5φ mini plug-in-power input for MIC-level.
- If connects with ceiling microphone, it can be used for noise MIC of lecture capturing at small classroom(10~20people).

*Audio and video transmission supports only IP video streaming.(Baseband is not possible to transmit audio.)

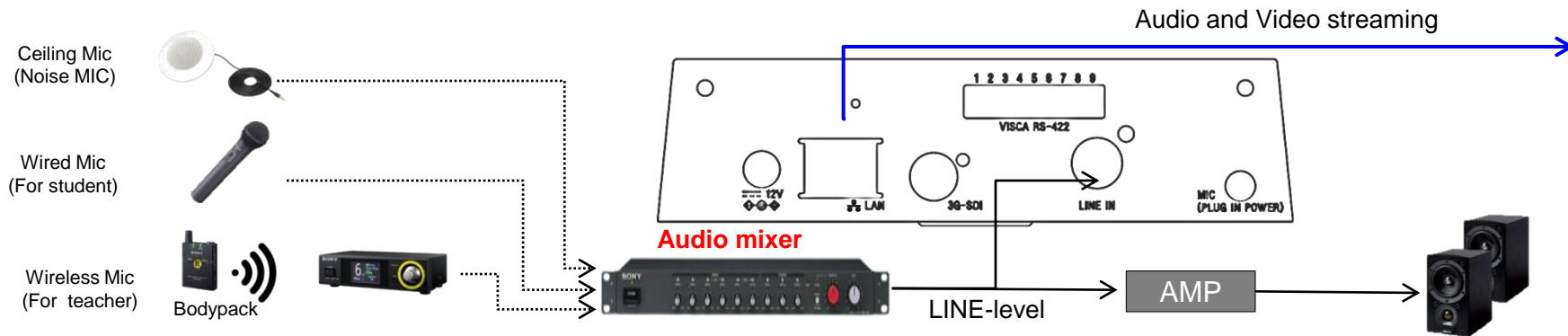


Recommended Microphone			
Manufature	Model name	Description	Photo
Sony	PCS-A1	Video conference system ceiling microphone	
Sony	SCA-M30	Video security system ceiling microphone	

Support an external audio input

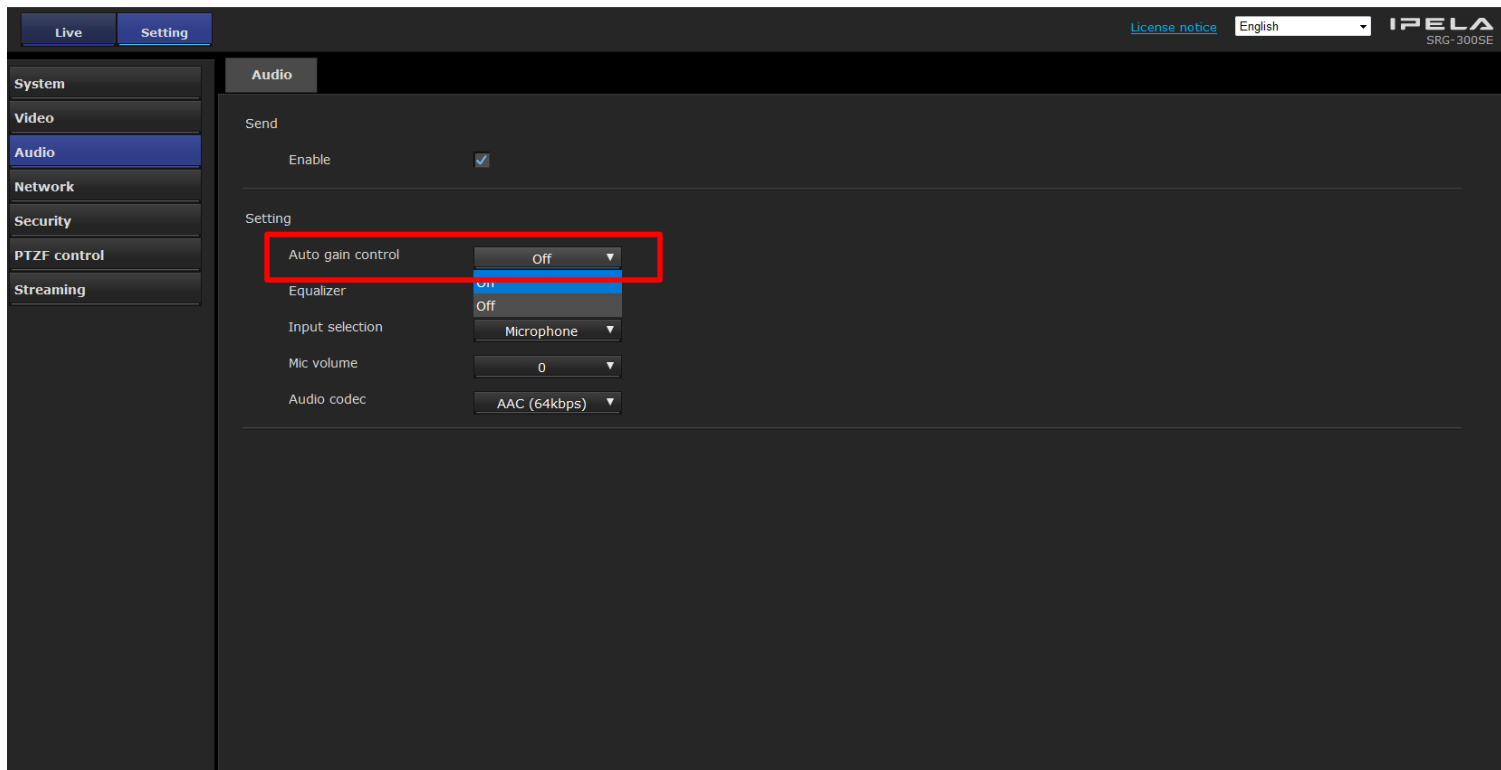
- Supports RCA audio input for LINE-level.
- If connects with audio mixer, it can be used on environment with PA system of lecture capturing at large classroom.(More than 50 people)

*Audio and video transmission supports only IP video streaming.(Baseband is not possible to transmit audio.)



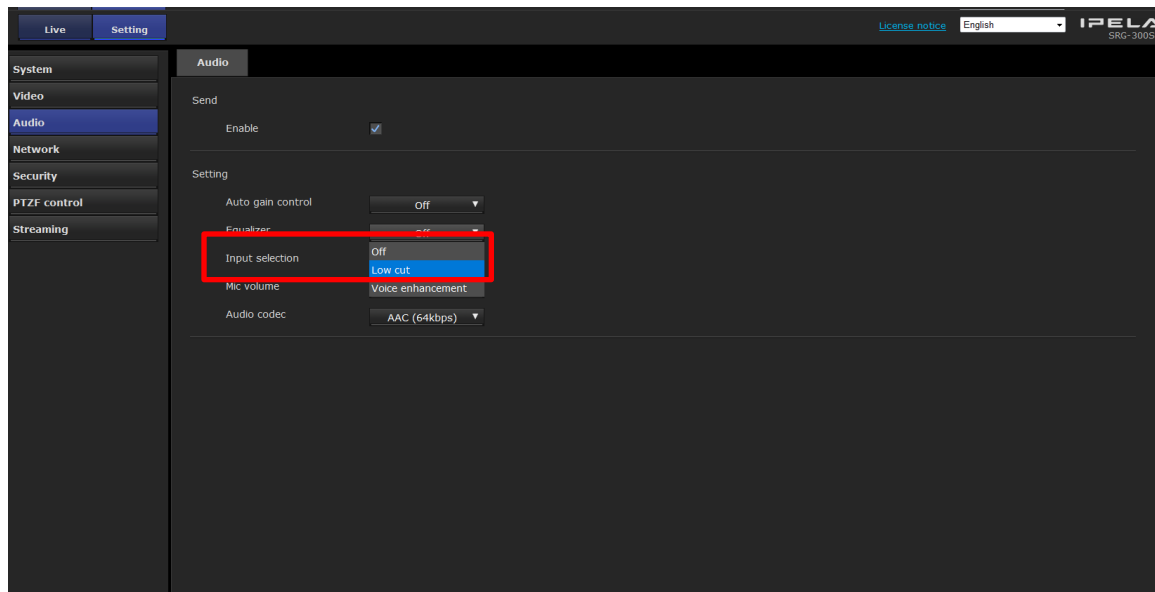
Embedded Auto Gain Control

- AGC(Auto Gain Control) ON/OFF function is embedded.
- It can adjust speaker's voice to an adequate sound level .



Easy audio effect equalizer

- Select the 2 type of sound equalizers to adjust the sound frequency response based on usage environment.
 - 1, Low cut: Cutting low frequency response to reduce unwanted background operation noise and wind noise from the projector.
 - 2, Voice enhancement : Cutting low and high frequency responses effects that are outside the area of wanted frequencies makes the speaker's voice more clear.



Reduce the latency inside camera

- Sony newly developed the mechanism to reduce the latency effectively between audio and video inside the camera. This feature achieved lower latency comparing to conventional network camera.
- Actual measurement value of gap between Video and Audio at the camera output with IP streaming will be released later.
- This feature in camera realized transmission to recording media with no discomfort for the delay of video and audio. And, accurate audio/video synchronization is achieved using the camera's time stamp in the network-attached recorder.

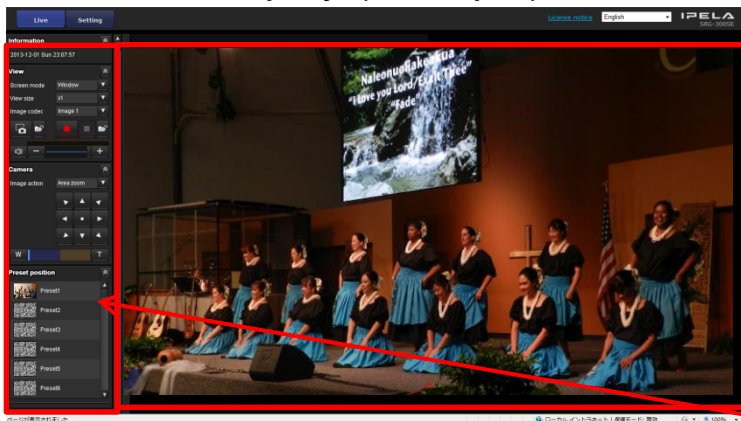
We will inform you details later.

Web browser control and viewing

- Using ActiveX viewer and plug-in free viewer is able to display an image and PTZ control of the camera, on PC and mobile devices.
- Up to 20 clients can view streaming. (*Up to 10 clients can receive video and audio)
- in case of Android/iOS might not do according to the OS version. *The resolution ,framerate and bitrate setting is limited.

Supported OS: Windows/ Android/ iOS

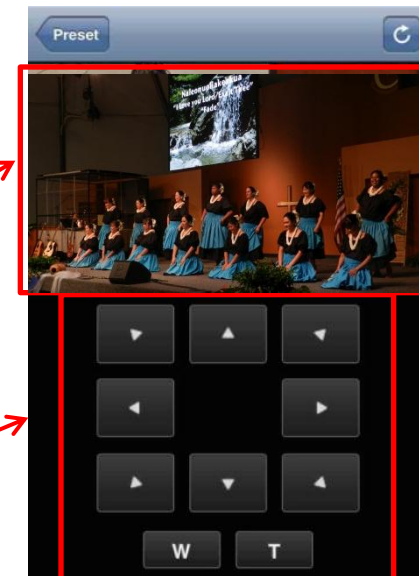
PC screen display (example)



Monitor screen

Control panel

Smartphone
Screen display (example)

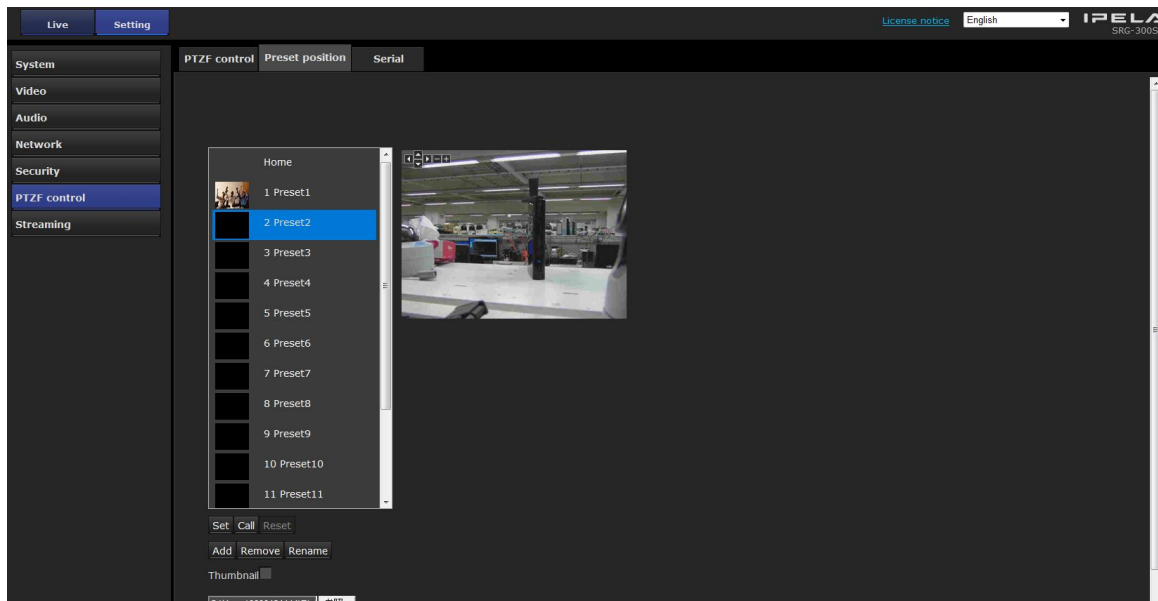


256 preset positions

- camera preset is able to set to up to 256 positions using a plug-in free viewer and ActiveX viewer.
- Position number of from 17th to 256th are stored PTZF only.

RM-IP10 : Up to 16
ActiveX Viewer, Plug in free viewer : Up to 256

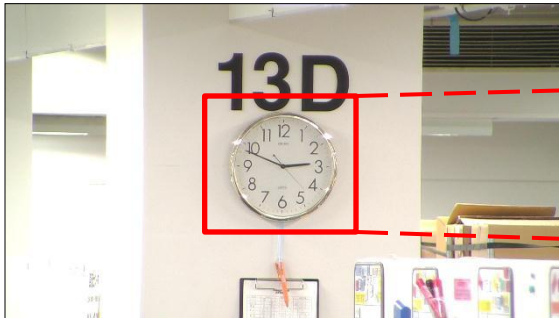
ActiveX Viewer (example)



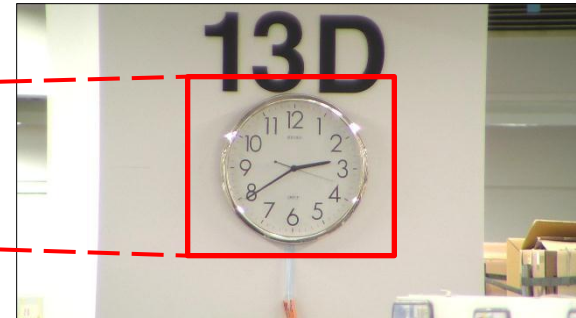
Other Features

30x higher optical zoom

20x zoom



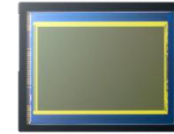
30x zoom





Enhanced image quality with View-DR function

- View-DR is a combination of :
 - Full-capture Wide-D technology,
 - High-speed Exmor™ CMOS sensor, and
 - Visibility Enhancer (VE) technology
- View-DR provides benefits :
 - In case of video conference, the camera distinguishes light and dark areas in the same scene, adjusts the brightness for dark areas, and also controls the bright areas.
 - In case of lecture capturing, teacher's face can not be too dark due to appropriate bright control in the camera.



Exmor can get:
-Higher resolution
-Lower noise

Exmor™
APS HD CMOS



OFF



ON

NOTE: (performance limitation) When the Wide-D mode sets High,

1) When Zoom and Pan/Tilt control under the light-dark change is big gap, the output video can pause in three frames.

2)When Pan and Tilt moves, the color reproduction of high-contrast object can be incorrect.

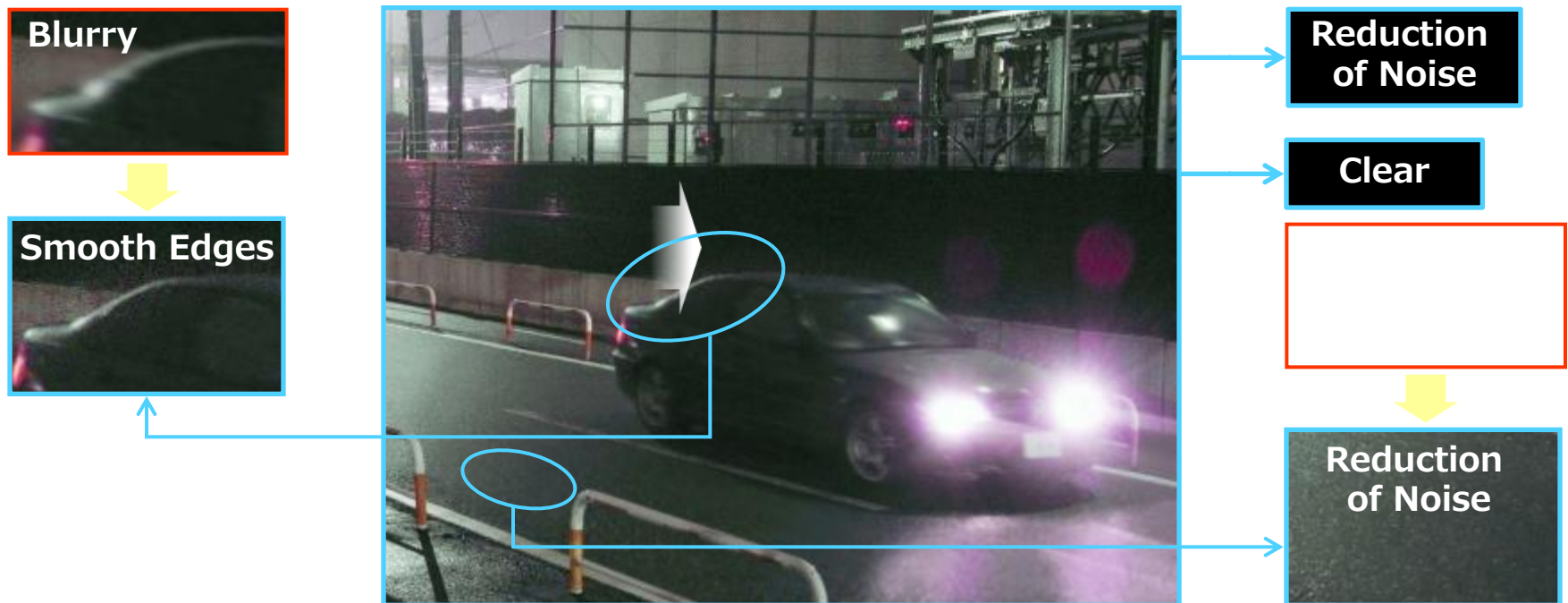
VISCA control

- RM-IP10 can control to camera by serial VISCA through RS-422.
- VISCA over IP function is not implemented on initial version.



eXellent Dynamic Noise Reduction

- Technology from Sony in Cameras and Encoders
- Designed to maximise noise reduction
- Designed to minimize motion blur under low illumination



eXellent Dynamic Noise Reduction

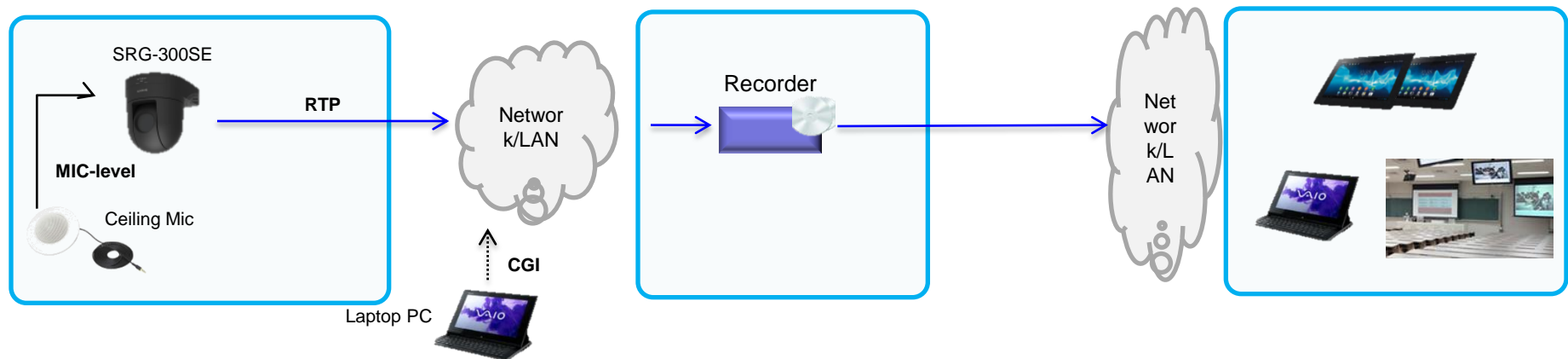
- Applies 3D noise reduction to static object dynamically
- Applies 2D noise reduction to moving object
- Combination of 2D and 3D noise reduction algorithm



System Configuration & Connection

IP only system

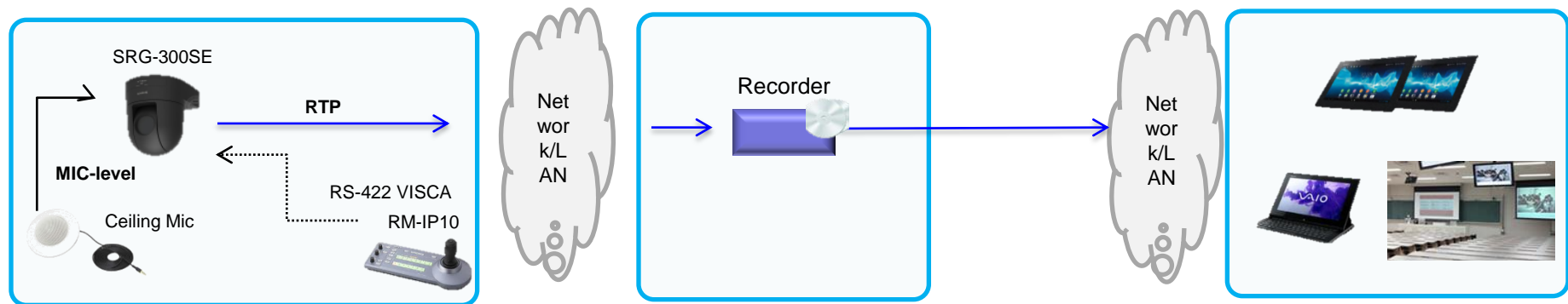
- IP video streaming and camera control by CGI command.



IP streaming and VISCA control system

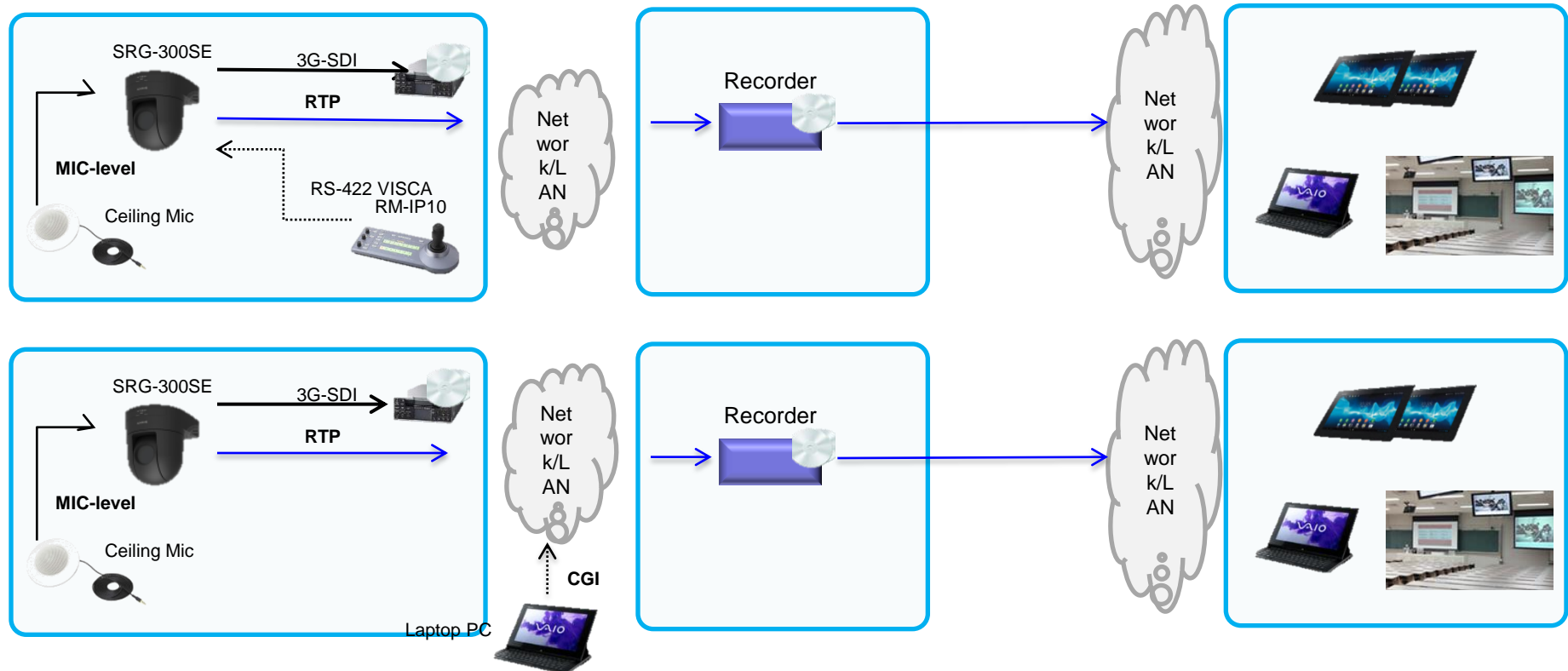
CONFIDENTIAL

- IP video streaming and camera control by VISCA.



IP and baseband video system

- IP video streaming and baseband video through 3G-SDI outputs.



Specifications

SRG-300SE, SRG-301SE

Specifications





CONFIDENTIAL

Camera	Image Sensor	1/2.8 Exmor CMOS
	Image Sensor (Number of Effective Pixels)	Approx. 2.1 Megapixels
	Signal System	1080/59.94p(A/B), 50p(A/B), 29.97p, 25p 1080/59.94i, 50i 720/59.94p, 50p, 29.97p, 25p
	Minimum Illumination (50IRE)	1.4 lux (F1.6, 50 IRE, high-sensitivitymode OFF, 30fps) 2.8 lux (F1.6, 50 IRE, high-sensitivitymode OFF, 60fps) 0.35 lux (F1.6, 50 IRE, high-sensitivitymode ON, 30fps) 0.7 lux (F1.6, 50 IRE, high-sensitivitymode ON, 60fps)
	S/N Ratio	50 dB
	Gain	Auto/Manual (0 to +43 dB)
	Shutter Speed	1/1 to 1/10000 sec(59.94 Hz system) 1/1 to 1/10000 sec(50Hz system)
	Exposure Control	Auto, Manual, Priority AE(Shutter,Iris), Exposure compensation, Blight
	White Balance	Auto, Indoor, Outdoor, One-push auto, ATW_Manual
	Optical Zoom	30x
	Digital Zoom	12x
	Focusing System	Auto/Manual
	Horizontal Viewing Angle	63.7 degree(Wide)
	Focal Length	f=4.3mm(wide) to 129 mm(Tele)
	Focal Length	F1.6 to 4.7
	Minimum Object Distance	10 mm(Wide)~1200 mm(Tele)
	Pan/Tilt Angle	Pan: ±170° Tilt: +90°/-20°
	Pan/Tilt Speed (Max.)	Pan 100°/sec Tilt 90°/sec
	Preset Position	256 *Position number of from 17th to 256th are stored PTZF only
Camera Features	Day/Night ICR	Yes
	Wide Dynamic Range	Yes(View-DR)
	Noise Reduction	Yes
	Image Stabilization	Yes
	Image Flip	Yes
	Superimpose Number	3 independent positions for characters (Codec, Date & Time, Event, Text (Max. 64 characters)), 1 independent position for a logo mark
	Superimpose Language	English
	Menu Language	English, Japanese, Chinese (simplified), Chinese (traditional), French, Spanish, German, Italian, Korean, Portuguese, Russian, Arabic, Hindi, Vietnamese, Thai
		*OSD menu support only English.
	Smartphone viewer	Yes *not support audio transmission.
Video	Resolution	1920 x 1080, 1280 x 720, 1024 x 576, 720 x 576, 720 x 480, 704 x 576, 640 x 480, 640 x 360, 352 x 288, 320 x 184 (H.264, JPEG)
	Compression Format	H.264, JPEG
	Maximum Frame Rate	H.264: 60 fps (1920 x 1080) JPEG: 30 fps (1920 x 1080)
	Bitrate Compression Mode	CBR/VBR (selectable)
	Range of Bitrate Setting	64 Kbps to 32 Mbps
	Image Cropping	No
	Adaptive Rate Control	H.264
	Bandwidth Control	JPEG
	Multi Streaming Capability	Triple streaming
	Number of Clients	20
		*Up to 10 clients can receive video and audio combined streaming.
		CS Pro
Audio	Compression Format	AAC-LC(64kbps/128kbps)

System Requirements	Operating System	Mac OS(Plug-in free viewer only) Android/ iOS(Smart phone viewer only) Windows Vista (32 bit) Ultimate, Business Edition Windows 7 (32/64 bit) Ultimate, Professional Edition Windows 8 Pro (32/64 bit) Microsoft DirectX 9.0c <
	Processor	Intel Core i7 2.8 GHz <
	Memory	2 GB <
	Web Browser	Microsoft Internet Explorer Ver. 8.0, Ver. 9.0, Ver 10.0, Ver 11.0 Firefox Ver. 19.02 (Plug-in free viewer only) Safari Ver. 5.1 (Plug-in free viewer only) Google Chrome Ver. 25.0 (Plug-in free viewer only)
Network	Protocols	IPv4, TCP, UDP, ARP, ICMP, IGMP, HTTP, DHCP, DNS, NTP, RTP/RTCP, RTSP over TCP, RTSP over HTTP, IPv6, HTTPS, SNMP (v1, v2c, v3), SSL
	QoS	DiffServ(DSCP)
	Multicast Streaming Support	Yes
	ONVIF Conformance	No
	Wireless Network	No
	Authentication	IEEE802.1X
	Hd Video Output	3G-SDI *not support audio transmission.
	Sd Video Output	-
	MIC Input	Mini jack (Monaural): 2.5 V DC plug-in power
	LINE Input	RCA (Monaural)
Interface	Network Port	10BASE-T /100BASE-TX (RJ-45)
	Serial Interface	RS-422
General	Power Requirements	DC 12V (DC 10.8 to 13.2V)
	Power Consumption	16.8W
	Operating Temperature	0 °C to 40 °C 32 °F to 104 °F
	Storage Temperature	-20 °C to +60 °C -4 °F to +140 °F
	Dimensions (W x H x D)*1	157 x 164 x 163mm 6 1/4 x 6 1/2 x 6 1/2 inches
	Mass	Approx. 1.4kg
	Mass	3 lb 1.4 oz
	Body Color	White/Black
	Wide Conversion Lens Attachable	No
	Mountable Angle	<±15°
	Ceiling Mount	Yes
	Supplied Accessories	AC power adaptor (1) AC power cable (1) Ceiling bracket (2) RS-422 connector plug (1) Wire rope(1) Screw M3 x 8(8)

Comparison chart

Quick comparison

	Customer		Sony	Panasonic	BOSCH	AXIS	
	Model Name		SRG-300SE SRG-301SE	AW-HE60SN	HD Conference Dome VCD-811-IWT	Q6035-E	
	Photo				 HD Onvif		
Camera	Video Signal		HD	1080/59.94p,50p,29.97p,25p 1080/59.94i,50i 720/59.94p,50p,29.97p,25p	1080/59.94i, 50i, 29.97PsF, 25PsF, 720/59.94p, 50p	1080/30p 720/60p	No
			SD	No	576/50i, 480/59.94i	No	No
	Horizontal Viewing Angle		63.7°(Wide)		Horizontal: 50.6° (W) 5.5° (T)		Horizontal: 54.1° (W) 2.9° (T)
	Lens	Focal length	f(Wide)	4.3mm	4.7mm (36.9mm at 35mm conversion)	6.3mm	4.7mm
			f(Tele)	129.0mm	84.6mm(664.5mm at 35mm conversion)	63mm	94mm
			F	F1.6 to 4.7	F1.6 to 2.8	F1.8 to 2.5	F1.8 to 3.5
			O. Zoom (D.zoom)	30x(12x)	18x(10x)	10x(16x)	20x(12x)
	Pan/Tilt	Angle	Pan	±170°	±175°	360°	360°
			Tilt	+ 90°/-20°	+ 90°/-30°	+93.6°/0°	180°
		Max.Speed	Pan	100°/sec	90°/sec	120°/sec	0.05° - 450°/sec
			Tilt	90°/sec	90°/sec	100°/sec	0.05° - 450°/sec
	Min. illumination		1.4 lux (F1.6, 50 IRE, high-sensitivitymode OFF, 30fps) 2.8 lux (F1.6, 50 IRE, high-sensitivitymode OFF, 60fps) 0.35 lux (F1.6, 50 IRE, highsensitivitymode ON, 30fps) 0.7 lux (F1.6, 50 IRE, high-sensitivitymode ON, 60fps)	3 lx (50IRE, F1.6, +36dB)	<Day Mode> Normal: 1.2lx(30IRE) 2.0lx(50IRE) SensUP on(64x) :0.038lx(30IRE)0.063lx(50IRE) <Night Mode>Normal: 0.06lx(30IRE) 0.1lx(50IRE) 0.0018lx(30IRE) 0.0031lx(50IRE)	Color: 0.8x (30IRE, F1.6)	
	S/N ratio		50dB	54dB	50dB		
	Preset Positions		256(Position number of from 17th to 256th are stored PTZF only.)	100	64		
	Video Output Interface		3G-SDI	HD-SDI, Analog Component(Y/Pb/Pr), SD-SDI, VBS	HD-SDI	No	
	Camera Control Serial Interface		RS-422	RS-422	No	No	
Video	Resolution		1920 x 1080, 1280 x 720, 1024 x 576, 720 x 576, 720 x 480, 704 x 576, 640 x 480, 640 x 360, 352 x 288, 320 x 184	640 x 480, 640 x 320, 320 x 240, 320 x 180	1920 x 1080, 1280 x 720, 1280 x 720, 854 x 480, 432 x 240	1080p: 1920x1080 to 320x180 720p: 1280x720 to 320x180	
	Compression Format		JPEG,H.264	JPEG,H.264	M-JPEG, H.264	JPEG,H.264	
	Maximum Frame Rate		H.264: 60 fps (1920 x 1080) JPEG: 30 fps (1920 x 1080)	H.264: 30 fps (1920 x 1080) JPEG: 30 fps (1920 x 1080)	H.264: 30 fps (1280 x 720) JPEG: 30 fps (1280 x 720)	H.264: 60/50 fps (60/50 Hz) JPEG: 50 fps (60/50 Hz)	
	Streaming	Protocol	IPv4, TCP, UDP, ARP, ICMP, IGMP*, HTTP, DHCP, DNS, NTP, RTP/RTCP, RTSP over TCP, RTSP over HTTP, IPv6, HTTPS,	HTTP(CGI),RTSP,RTP(+RTCP)	RTP,Telnet,UDP,TCP, IP, HTTP, HTTPS, FTP, DHCP, IGMP V2/V3, ICMP,ARP,SMTP,SNTP,SNMP, RTSP, 802.1x, iSCSI, DynDNS, UPnP	IPv4/v6, HTTP, HTTPS*, SSL/TLS*, QoS Layer 3 DiffServ, FTP, CIFS/SMB, SMTP, Bonjour, UPnP™, SNMPv1/v2c/v3 (MIB-II), DNS, DynDNS, NTP, RTSP, RTP,	
	Bitrate		64Kbps~32,000Kbps	64Kbps~4096Kbps	~10,000kbps	~50,000kbps	
	IP/Baseband simultaneous output		Yes	No	No	No	
Audio	Audio	Format	AAC-LC 16kHz/48kHz (64kbps/128kbps)	No	G.711: 8 bits 8 KHzL16: 16 bits 16kHz PCM Shield Bare copper braid	AAC-LC 8/16 kHz, G.711 PCM 8 kHz, G.726 ADPCM 8 kHz	
	Audio Input	ch Interface	1 RCA×1(LINE), Mini-phone(3.5φ)× 1(MIC)	No No	No No	1	
General	ONVIF Conformance		No	No	No	Yes	
	PoE		No	No	IEEE 802.3at, class 4	IEEE 802.3at, max. 30 W	
Operating temperature		0°C to 40°C (32°F to 104°F)		-10°C to 30°C (14°F to 86°F)		-40°C to 50°C (32°F to 122°F)	

Cosmetic Design & External Appearance

Cosmetic Design SRG-300SE(Black)

Front



Rear



Cosmetic Design SRG-300SE(White)

Front

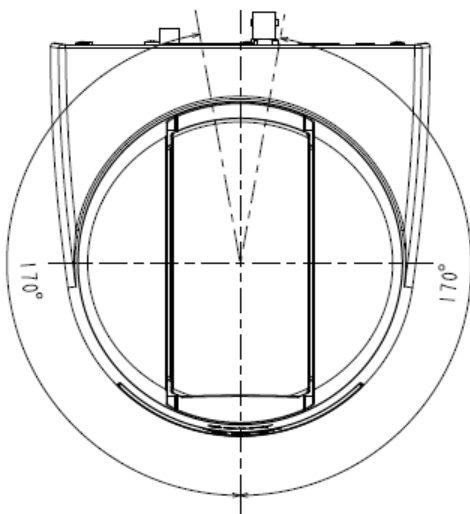


Rear

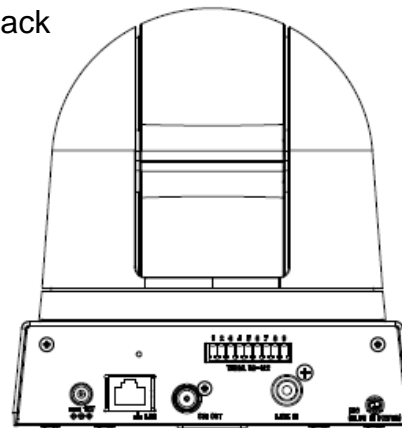


Dimensions<1>

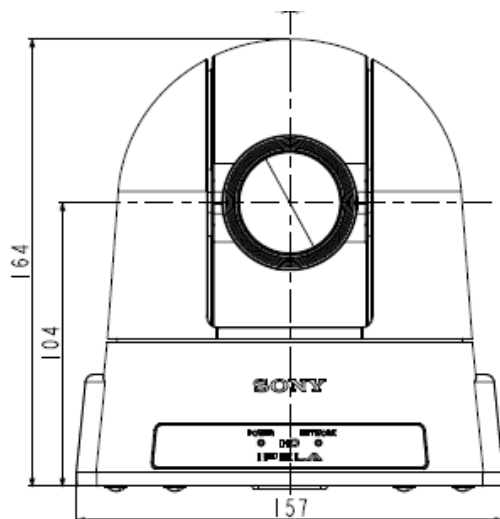
Top



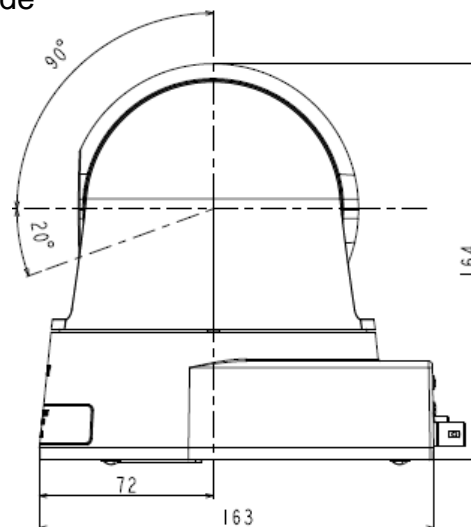
Back



Front

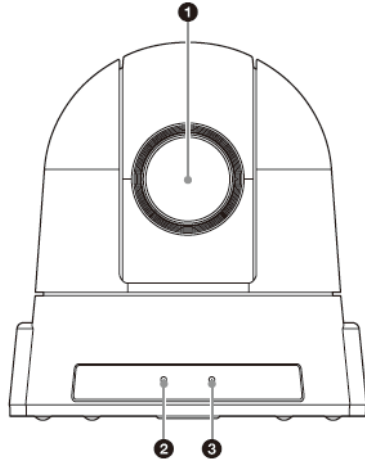


Side

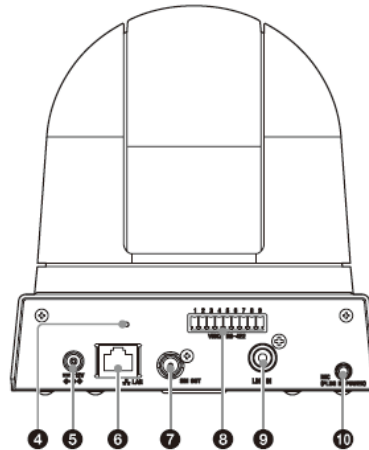


External Appearance

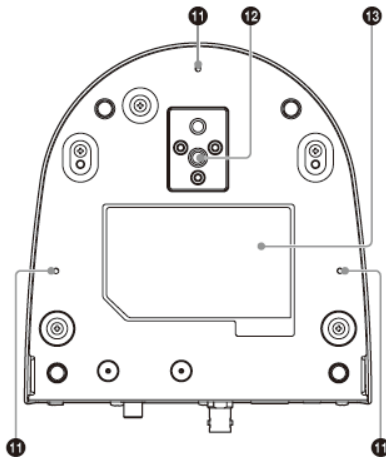
前面 / Front / Avant / Delante



背面 / Back / Arrière / Detrás



底面 / Bottom / Dessous / Abajo



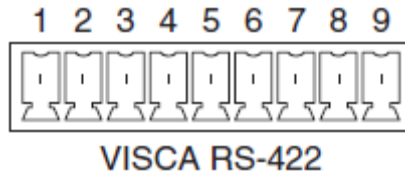
- | | |
|----|---|
| 1 | Lens |
| 2 | POWER indicator(green) |
| 3 | NETWORK indicator |
| 4 | Reset switch |
| 5 | DC 12V connector |
| 6 | LAN(network) port(RJ45) |
| 7 | SDI OUT(SDI output) connector |
| 8 | VISCA RS-422 connector |
| 9 | LINE IN(line input) connector |
| 10 | Microphone input terminal(minijack, monaural) |
| 11 | Ceiling bracket mounting screw holes |
| 12 | Tripod screw hole |
| 13 | Rating Label |

Pin Assignments

Pin Assignments

- To communicate via RS-422, use this connector. Use the supplied VISCA RS-422 connector plug.

The VISCA RS-422(9-pin) connector pin assignments.



Pin No.	Function
1	TXD IN+
2	TXD IN-
3	RXD IN+
4	RXD IN-
5	GND
6	TXD OUT+
7	TXD OUT-
8	RXD OUT+
9	RXD OUT-

Supplied Accessories

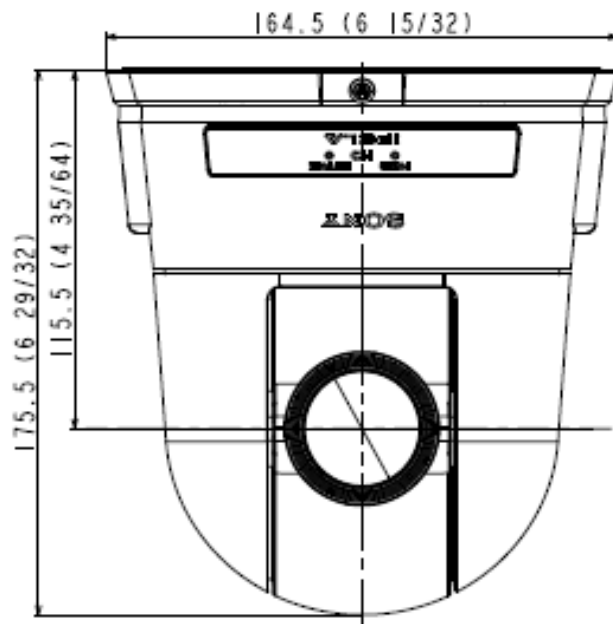
Supplied Accessories

- AC adaptor(1)
- AC cord(1) *SY model supplied at local.
- Ceiling bracket A(1)
- Ceiling bracket B(1)
- Wire rope(1)
- Mounting screw(3)
- VISCA RS-422 connector plug(1)

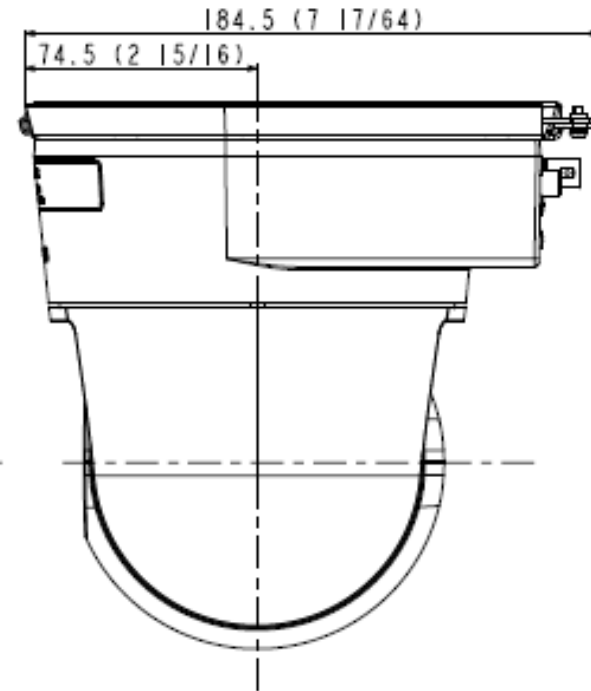
*IR remote controller is not attached since IR function is not supported.

Dimensions(Ceiling bracket B)

Front

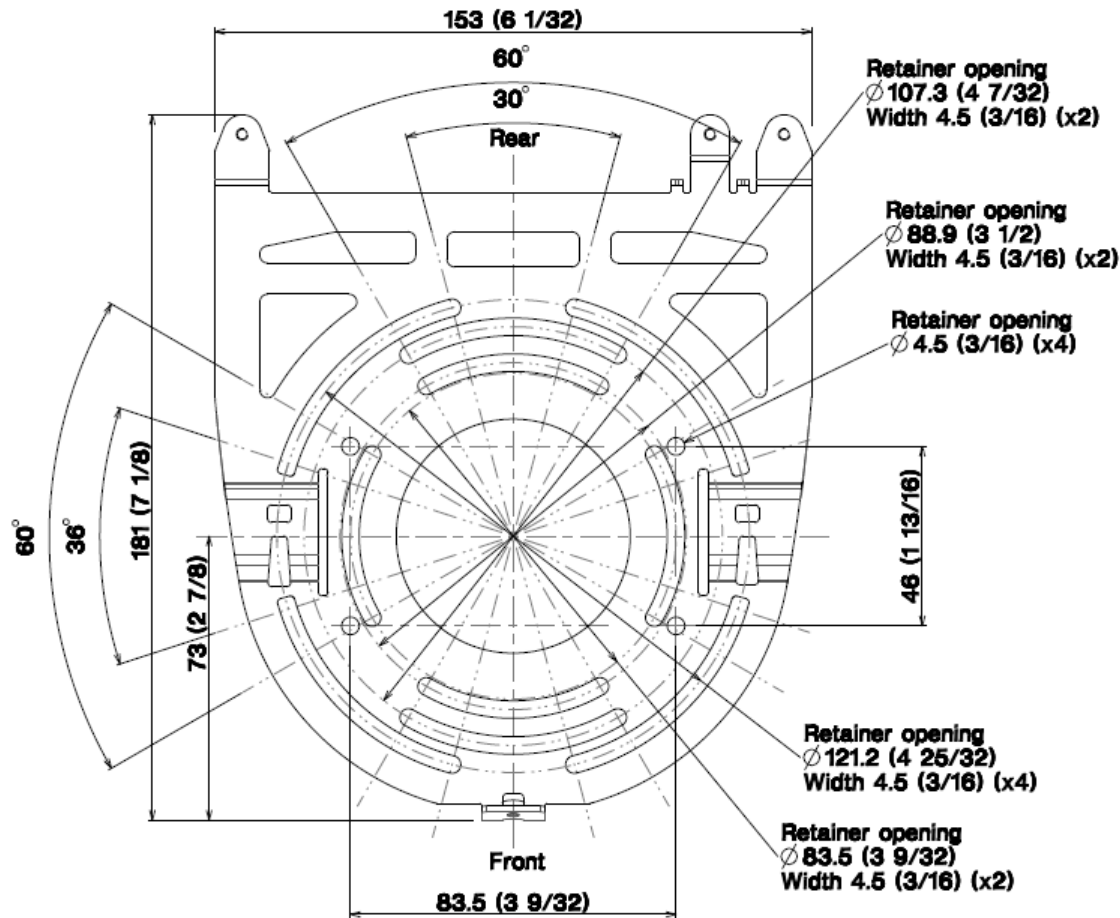


Side



Dimensions(Ceiling bracket B) <2>

Ceiling bracket (B)



Safety Approval

Safety Approval

Model Name	Dest.	Safety Approval	EMC
SRG-300SE	SY J	CB certificate: IEC60950-1 UL: 60950-1 Telecommunications Business Act: Technical standard (10/100x/1000)	VCCI : Class A FCC : Class A IC : Class A CE EMC conformity declaration: EN55022 (Class A),EN55024 KCC: EMC Australian EMC conformity declaration: EN55022 Class A compliance EAC(EMC-TR)
SRG-301SE	CN		