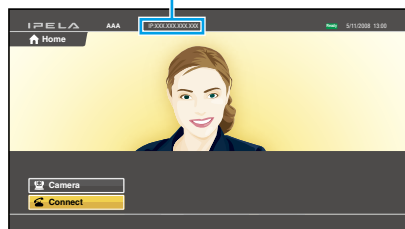


1. To begin with

Turn on your HD Visual Communication System and TV monitor, and check the following to ensure that connection is possible.

- ① Is the picture of your camera (local picture) on the monitor screen?
- ② Is the IP address of the local system or the ISDN line number** displayed?



Notes:

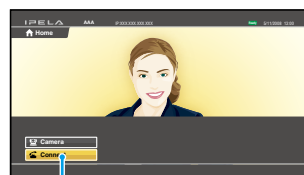
- Connection to a remote party is not possible if neither the IP address nor ISDN line number** is not displayed.
- You can hide the IP address of the local system using the setup menu.

Main indicators that appear during communication

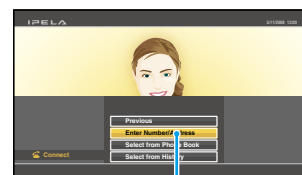
	FAR	Controlling a remote camera.
	NEAR	Local microphone is turned off.
		Presentation (transmission) is being executed.
		Presentation (reception) is being executed.
	NEAR	Local party has drawing rights for annotation (function for writing on the display via a pen tablet).

2. Let's connect

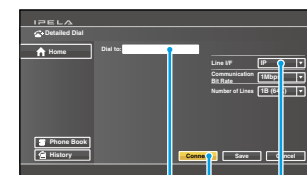
This section describes how to call a remote party that is not registered in the Phone Book.



1



2



4

5

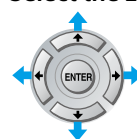
3

Press ENTER after each selection to proceed.

1 Select "Connect."

2 Select "Enter Number/Address."

3 Select the Line I/F.*



* The Line I/F cannot be selected depending on the system setup.



4 Enter the IP address or ISDN line number** of a remote party.



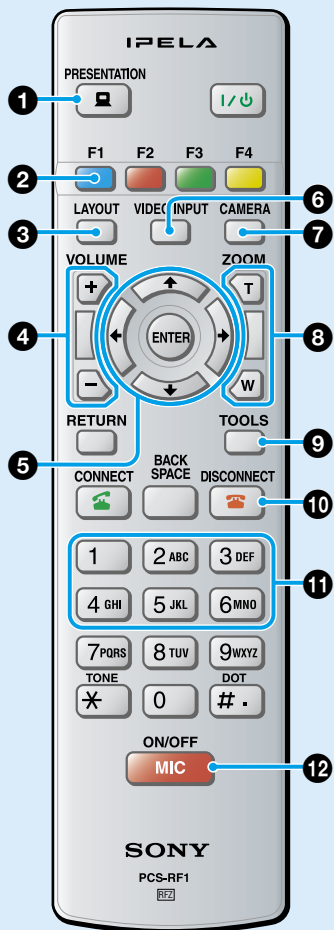
5 Select "Connect" and press ENTER, or press .

The number is dialed, and the system establishes connection.

** ISDN will be supported in version 1.41 and later.

Remote Commander Guide

For details on operations, refer to the Operating Instructions (stored in the supplied CD-ROM).



1 Transmitting a picture for presentation

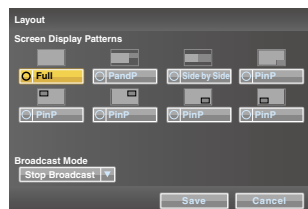
You can transmit a picture from the computer connected to the DVI-I 2 (PC) IN connector to a remote party.

2 Switching the camera for control

Switch between controlling the local camera or the remote camera.

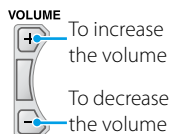
3 Switching the picture on the TV monitor

Press the LAYOUT button to display the Layout menu.



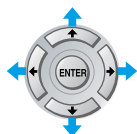
Select the screen display pattern of the local and remote pictures using the $\uparrow/\downarrow/\leftarrow/\rightarrow$ and ENTER buttons.

4 Adjusting the sound volume of the remote party



5 Operating the menu

Select the setting item in the menu displayed on the screen, and confirm the selection.



6 Selecting the input picture

Press the VIDEO INPUT button to display the Video Input menu.



Select the video input using the $\uparrow/\downarrow/\leftarrow/\rightarrow$ and ENTER buttons.

CAMERA: Video input from the camera connected to CAMERA connector

HDMI: Video input from the camera or equipment connected to HDMI IN connector

DVI-I 1: Video input from the equipment connected to DVI-I 1 IN connector

DVI-I 2: Video input from the equipment connected to DVI-I 2 (PC) IN connector

* This function is not available on the PCS-XG77/XG77S.

7 Displaying Camera menu

Press the CAMERA button to display the Camera menu.



Select the menu item using the $\uparrow/\downarrow/\leftarrow/\rightarrow$ and ENTER buttons, and the selected adjustment menu is displayed.

Adjustments: for angle and zoom adjustments

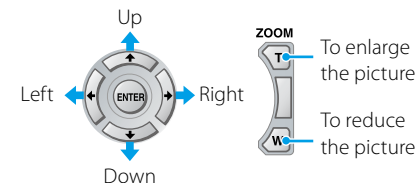
Brightness: for brightness adjustment

Preset: for presetting and recalling the camera angle and zoom

Details: for focus adjustment, white balance adjustment, backlight compensation and digital zoom function

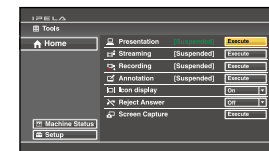
8 Adjusting the camera angle and zoom

To move the camera angle



9 Displaying Tools menu

Press the TOOLS button to display the Tools menu.



Select the menu item using the $\uparrow/\downarrow/\leftarrow/\rightarrow$ and ENTER buttons, and you can use the selected function such as "Annotation."

10 Ending the communication and disconnecting

11 Recalling the Preset Camera Angle

Select "Preset" in the Camera menu to display the Preset Setting List. Press button 1 to 6 to move the camera to the preset position.

12 Switching on/off the local microphone